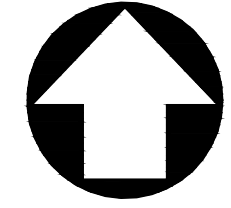
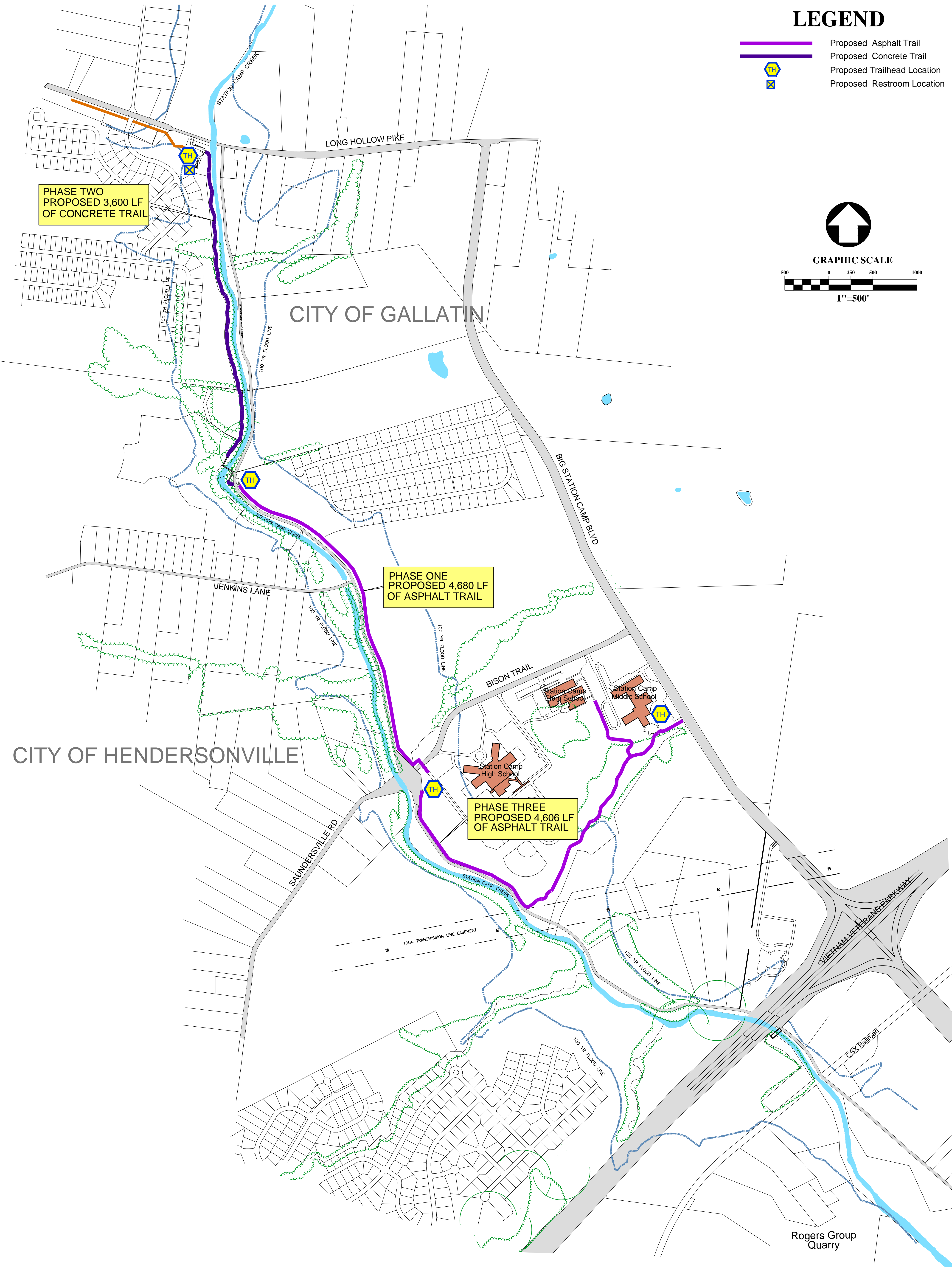
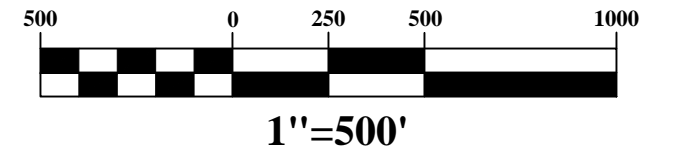


# LEGEND

- Proposed Asphalt Trail
- Proposed Concrete Trail
- Proposed Trailhead Location
- Proposed Restroom Location



GRAPHIC SCALE



PHASE TWO  
PROPOSED 3,600 LF  
OF CONCRETE TRAIL

PHASE ONE  
PROPOSED 4,680 LF  
OF ASPHALT TRAIL

PHASE THREE  
PROPOSED 4,606 LF  
OF ASPHALT TRAIL

## MASTER PLAN

# STATION CAMP GREENWAY

SUMNER COUNTY, TENNESSEE

JAN 2012



237 W Northfield Blvd. Suite 200  
Murfreesboro, Tennessee 37129  
Telephone: (615) 896-7375  
Facsimile: (615) 890-7016  
E-Mail: www.Wiserco.com